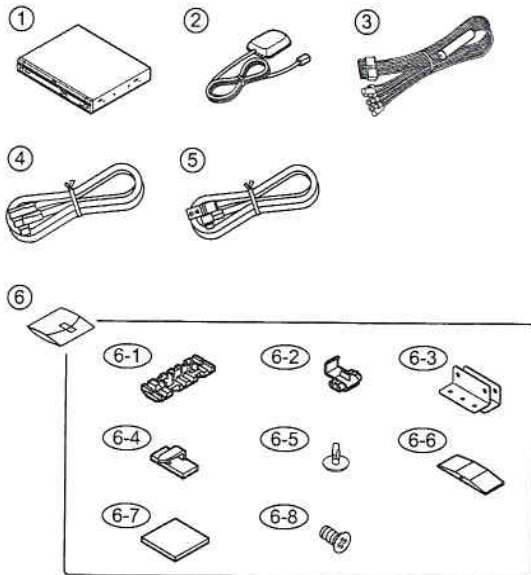


COMPONENTS

QY-5001B-A

| | | | |
|------|---|----------------------------|---------|
| 1. | Main unit | ----- | 1 |
| 2. | GPS antenna | 096-0147-00 | 1 |
| 3. | Power supply lead (5A Fuse | 854-6451-50 120-0050-00 | 1 1) |
| 4. | RGB cable | 855-2433-02 | 1 |
| 5. | CeNET cable(2.5m) | 855-3421-01 | 1 |
| 6. | Accessory bag | ----- | 1 |
| 6-1. | Electro-tap(for speed sensor) | 060-0018-00 | 2 |
| 6-2. | Electro-tap | 060-0305-00 | 1 |
| 6-3. | Mounting bracket | 300-7362-03 | 2 |
| 6-4. | Cord holder | 321-1026-01 | 10 |
| 6-5. | Canoe clip | 335-2515-00 | 4 |
| 6-6. | Waterproof rubber | 345-7473-00 | 1 |
| 6-7. | Double-sided tape for fastening the antenna | 347-6369-00 | 1 |
| 6-8. | Inatallation bolt(M4x6) | 714-4006-8B | 4 |



To engineers in charge of repair or inspection of our products.

Before repair or inspection, make sure to follow the instructions so that customers and Engineers in charge of repair or inspection can avoid suffering any risk or injury.

1. Use specified parts.
 - The system uses parts with special safety features against fire and voltage. Use only parts with equivalent characteristics when replacing them.
 - The use of unspecified parts shall be regarded as remodeling for which we shall not be liable. The onus of product liability (PL) shall not be our responsibility in cases where an accident or failure is as a result of unspecified parts being used.
2. Place the parts and wiring back in their original positions after replacement or re-wiring.
 - For proper circuit construction, use of insulation tubes, bonding, gaps to PWB, etc, is involved. The wiring connection and routing to the PWB are specially planned using clamps to keep away from heated and high voltage parts. Ensure that they are placed back in their original positions after repair or inspection.
 - If extended damage is caused due to negligence during repair, the legal responsibility shall be with the repairing company.
3. Check for safety after repair.
 - Check that the screws, parts and wires are put back securely in their original position after repair. Ensure for safety reasons there is no possibility of secondary problems around the repaired spots.
 - If extended damage is caused due to negligence of repair, the legal responsibility shall be with the repairing company.
4. Caution in removal and making wiring connection to the parts for the automobile.
 - Disconnect the battery terminal after turning the ignition key off. If wrong wiring connections are made with the battery connected, a short circuit and/or fire may occur. If extensive damage is caused due to negligence of repair, the legal responsibility shall be with the repairing company.
5. Cautions in soldering
 - Please do not spread liquid flux in soldering.
 - Please do not wash the soldering point after soldering.
6. Cautions in soldering for chip capacitors
 - Please solder the chip capacitors after pre-heating for replacement because they are very weak to heat.
 - Please do not heat the chip capacitors with a soldering iron directly.
7. Cautions in handling for chip parts.
 - Do not reuse removed chips even when no abnormality is observed in their appearance. Always replace them with new ones. (The chip parts include resistors, capacitors, diodes, transistors, etc).
 - Please make an operation test after replacement.
8. Cautions in handling flexible PWB
 - Before working with a soldering iron, make sure that the iron tip temperature is around 270°C. Take care not to apply the iron tip repeatedly (more than three times) to the same patterns. Also take care not to apply the tip with force.
9. Turn the unit OFF during disassembly and parts replacement. Recheck all work before you apply power to the unit.